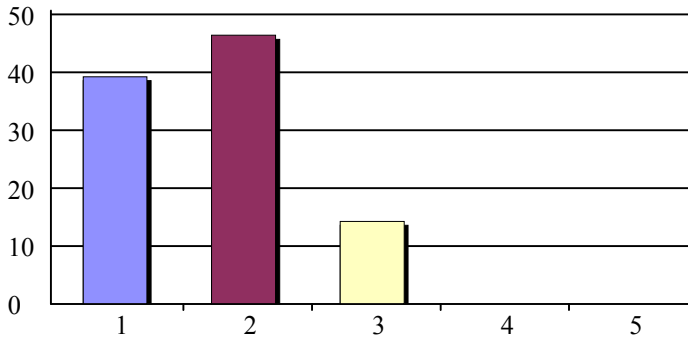


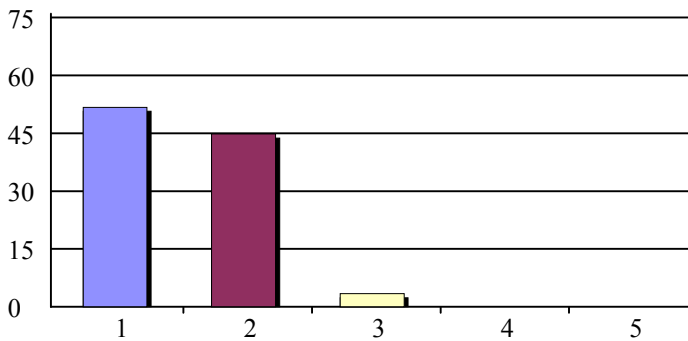
BR7

1. Identify the four key elements of Visual Thinking Strategy (VTS)



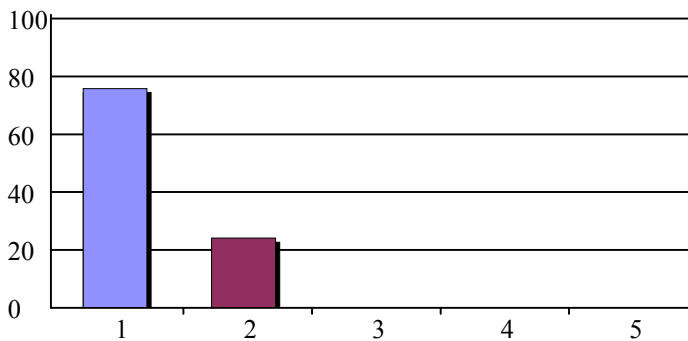
1. Strongly Agree	11	39%
2. Agree	13	46%
3. Neutral	4	14%
4. Disagree	0	0%
5. Strongly Disagree	0	0%
Total Responses:	28	
Mean:	1.75	Standard Deviation: 0.70

2. Describe how close reading of images enhances therapeutic competency



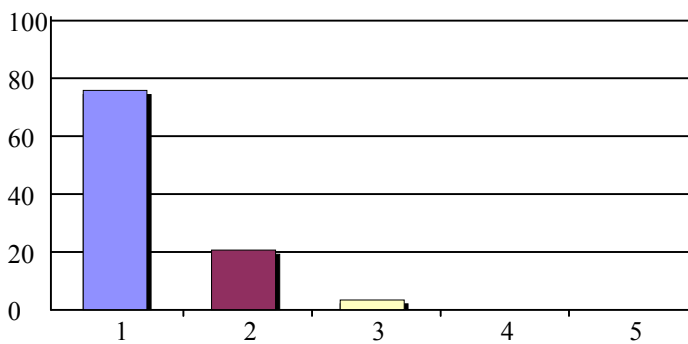
1. Strongly Agree	15	52%
2. Agree	13	45%
3. Neutral	1	3%
4. Disagree	0	0%
5. Strongly Disagree	0	0%
Total Responses:	29	
Mean:	1.52	Standard Deviation: 0.57

3. The speaker(s) level of knowledge and expertise was appropriate



1. Strongly Agree	22	76%
2. Agree	7	24%
3. Neutral	0	0%
4. Disagree	0	0%
5. Strongly Disagree	0	0%
Total Responses:	29	
Mean:	1.24	Standard Deviation: 0.44

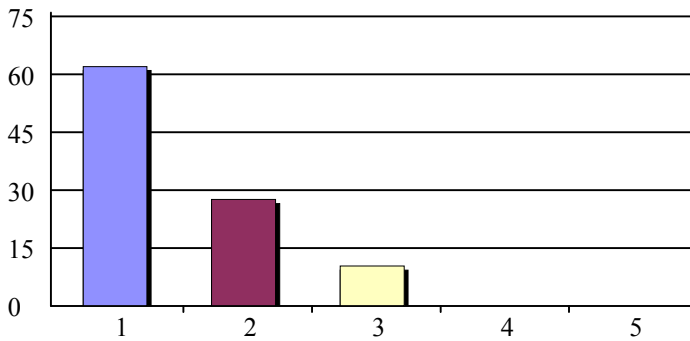
4. The teaching methods/strategies utilized for this session were effective



1. Strongly Agree	22	76%
2. Agree	6	21%
3. Neutral	1	3%
4. Disagree	0	0%
5. Strongly Disagree	0	0%
Total Responses:	29	
Mean:	1.28	Standard Deviation: 0.53

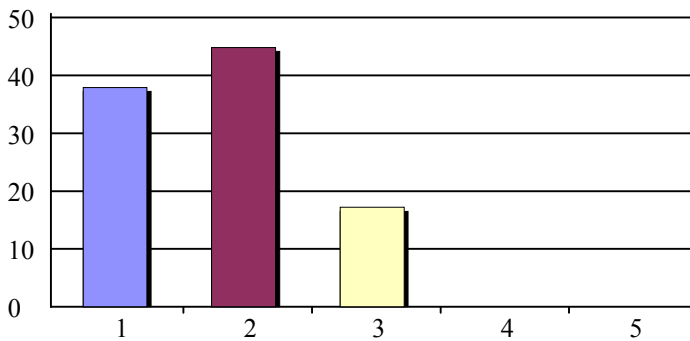
BR7

5. This presentation included enough opportunity to learn interactively from speakers and/or participants



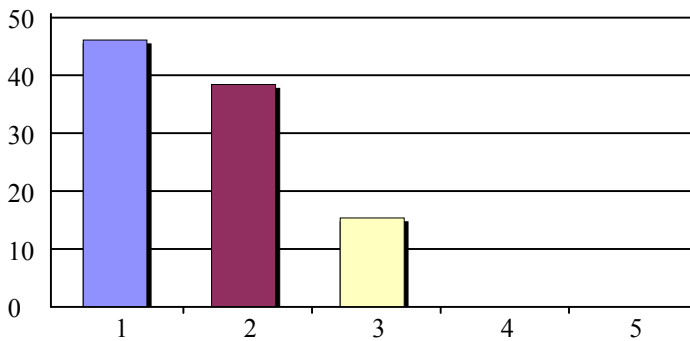
1. Strongly Agree	18	62%
2. Agree	8	28%
3. Neutral	3	10%
4. Disagree	0	0%
5. Strongly Disagree	0	0%
Total Responses:	29	
Mean: 1.48	Standard Deviation: 0.69	

6. Information presented enhanced my professional expertise



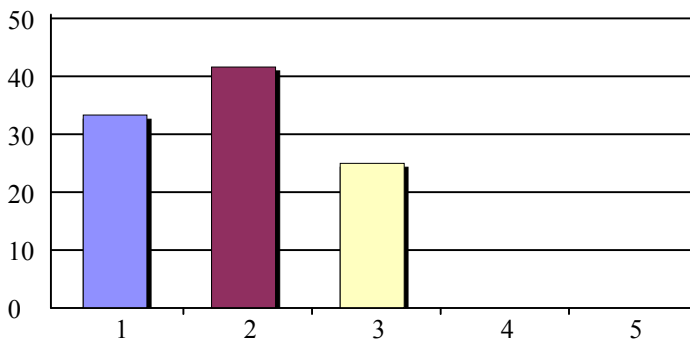
1. Strongly Agree	11	38%
2. Agree	13	45%
3. Neutral	5	17%
4. Disagree	0	0%
5. Strongly Disagree	0	0%
Total Responses:	29	
Mean: 1.79	Standard Deviation: 0.73	

7. I am confident in integrating information I have gained from this presentation into my student's curriculum and/or clinical practice (if applicable)



1. Strongly Agree	12	46%
2. Agree	10	38%
3. Neutral	4	15%
4. Disagree	0	0%
5. Strongly Disagree	0	0%
Total Responses:	26	
Mean: 1.69	Standard Deviation: 0.74	

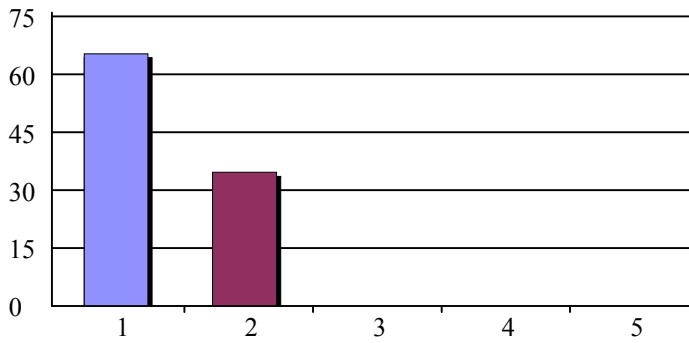
10. How much did you learn as a result of this CE program



1. Great Deal	8	33%
2. A Good Bit	10	42%
3. Some	6	25%
4. Little	0	0%
5. Very Little	0	0%
Total Responses:	24	
Mean: 1.92	Standard Deviation: 0.78	

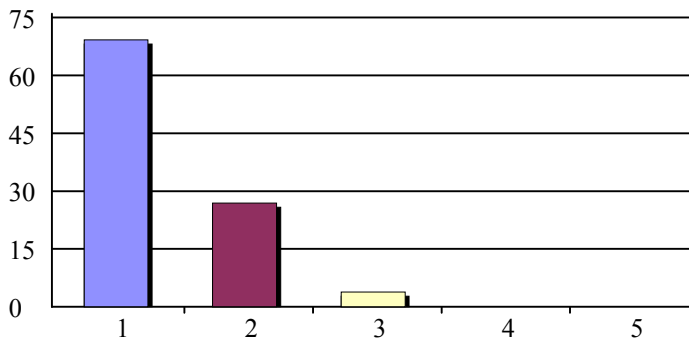
BR7

11. Content was appropriate for postdoctoral level training



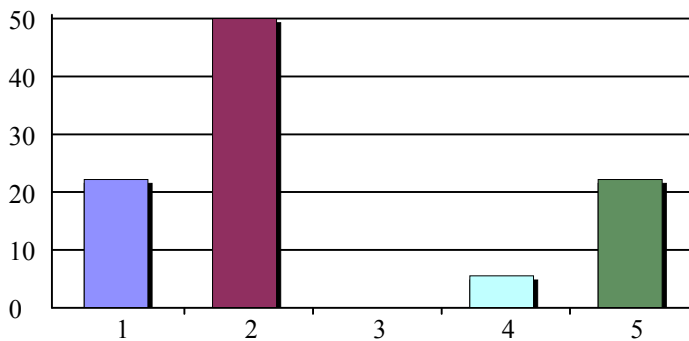
1. Strongly Agree	17	65%
2. Agree	9	35%
3. Neutral	0	0%
4. Disagree	0	0%
5. Strongly Disagree	0	0%
Total Responses:	26	
Mean: 1.35	Standard Deviation: 0.49	

12. Instruction was at a level appropriate to postdoctoral level training



1. Strongly Agree	18	69%
2. Agree	7	27%
3. Neutral	1	4%
4. Disagree	0	0%
5. Strongly Disagree	0	0%
Total Responses:	26	
Mean: 1.35	Standard Deviation: 0.56	

14. I have paid for and am/will be applying for a certificate for (check one credit type only):



1. AMA/PRA CME Category 1 Credit	4	22%
2. American Psychological Association (APA)	9	50%
3. AOA Category 2-A CME Credit	0	0%
4. American Academy of Family Physicians (AAF...)	1	6%
5. Nursing	4	22%
Total Responses:	18	
Mean: 2.56	Standard Deviation: 1.50	